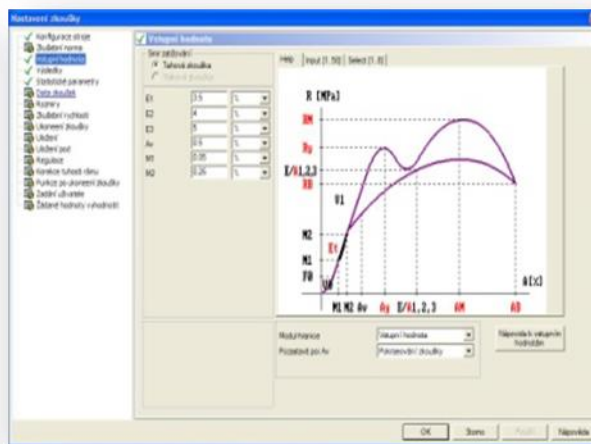
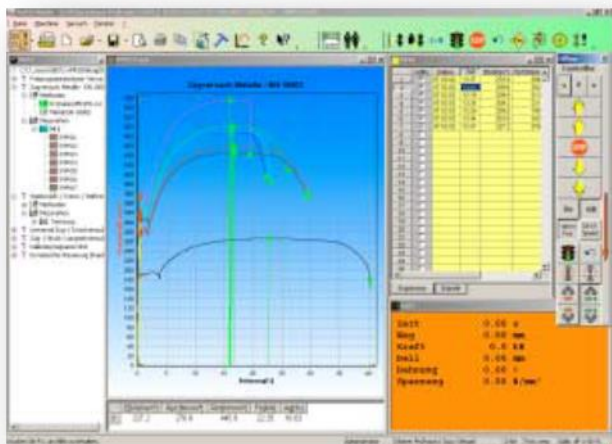


Product information

Test & Motion® - testing software



Description of testing software Test & Motion®

Software for testing should meet the following:

1. Display everything, **what I want**
2. Evaluate everything, **what I need**
3. Call up everything, **what I wish**

Our new 32-bit testing program **Test & Motion** was developed in a modular way and meets all three tasks. It consists of basic software with simple but adaptive test tension/pressure, and other various types of modules, which can be applied to almost all kinds of testing. The module of block programming enables an individual form of testing procedure. Our software can display all types of signal sources: the usual are strength, displacement and tensibility, also other sensors or other calculated curves may be indicated: Thickness of the specimen, temperature, weight, etc. are possible to obtain as well as the results via I/Os. The measured waveforms are then variably displayed in X and Y axes, or are stated as a values digitally.

Test & Motion is a complete software for testing materials in tension, compression, bending, shear, cyclic loading which supports **DIN, EN, ISO, ASTM, GOST standards** and other industry standard test methods. Parts of the program are the transfer of data, machine control, graphical recording of executed test, a table of measured values and statistical calculation. The program Test & Motion uses the operating system MS Windows.

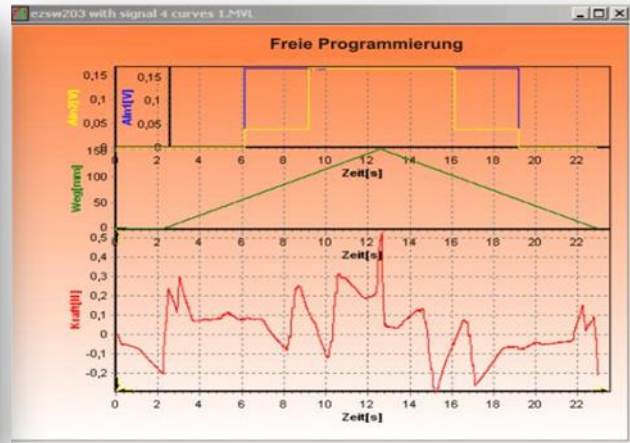
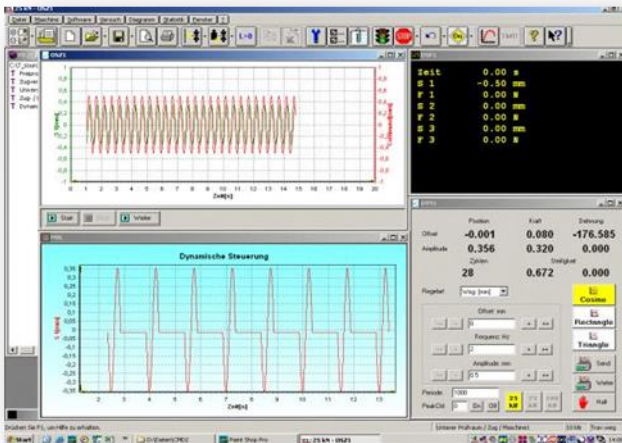
Test results can be recorded graphically in real time. An option of individual processing is offered at the end of the test. – **Record of multiple curves – zooming via Zoom – point marking.**

An integral part of testing machines LabTest is the software **Test & Motion** which helps to increase productivity and quality of testing in your testing laboratory. You can change the order

of your tests in a suitable way how you want to work and adapt your testing your environment in order to make it easy for the operators of the materials mechanical properties measuring, regardless their skills.

Test & Motion software features®

- Simple, inductive and efficient
- Tailored and practice proven applications, freely definable all kinds of protocol printing
- Individual file programming
- A set of programmes for individual custom testing
- Directly available almost all standard ways of evaluating
- Special specific applications, programmable modules
- Digital displaying of all channels
- Editable channels
- Extensive statistic of results
- Storing of results data in various formats - ASCII, SQL and Excel file
- Transfer of data from other devices e.g. thickness gauge, scales etc.
- Compatibility of any EDC box system from company LABORTECH
- Possibility of adding more individual channels
- Fast and efficient testing
- Multilingual versions (English, Russian, Polish etc.)
- Protocol printing in various languages
- Installation on any computer without using a licence



DynPack – software for dynamic testing machines

Test & Motion DynPack software module was developed for controlling of dynamic testing machines. It gathers and processes data in speed up to 1 kHz through more than 8 channels.

DynPack communicates with several EDC systems simultaneously. In this way, it enables controlling of 2 or 3-axes of systems. DynPack has a functional generator which is able to generate a sinusoid, rectangular or triangular signal.

Basis - Test & Motion software with pension/pressure test

- Servicing area for all T & M modules
- The test is adjustable for almost all applications
- Servicing area of the program, parameters entering and storing in graphic memory x, y on-line displaying
- X and Y axis incrementally as: power, voltage, displacement of crossbeam, tensibility, technical tensibility, time (starting from the beginning of the test), real tensibility, nominal tensibility, time and defined input signal
- Detection of 5 values on the axes x, y, maximum, bursting as a value of x, y, corresponding with measurements during the pressure test
- Connection to system LIM
- Statistical functions: min. / max. values, range, medium values, standard deviation, statistical assurance, etc.
- Displaying of data transfer by way of testing machine; power, displacement of crossbeam, ductility and definition of the input signals.

Graphics - Test & Motion

Test results can be recorded graphically in real time. An option of individual processing is offered at the end of the test.

- Display of several curves, even with displacement
- Zoom function
- Marking of points
- Text insertion into the graphics
- Two values in one axis

Manufacturer:

LABORTECH s.r.o., Rolnická 130a, 747 05 Opava, Czech republic. Tel.: +420 553 731 956, +420 553 775 327
 Mob.: +420 602 527 646, +420 731 656 723, info@labortech.cz, www.labortech.cz, Czech republic

Free programming in software Test & Motion®

This modulus application enables chaining of any number of blocks in operational loading. Individual performance criteria are defined for each block (e.g. pre-set voltage, deformation, etc.) various deformation speeds. This module allows a completely free choice of test sequences, which the user can create on his own.

Test modules for Test & Motion®

Test & Motion software contains more than 100 test methods and standards.

- Metals tension/pressure and bending tests acc. DIN and EN
 - ISO 6892-1, DIN 50106, DIN 50110
 - DCPD methods
 - Cyclic fatigue loading of metals
- Plastics – tension, pressure, bending
 - EN ISO 527-1, EN 20604, DIN 53452, DIN 53504,
 - DIN 53457, DIN 53456, EN 600,
 - Creep module DIN 19537, ISO 899-1
 - Hardness of plastics test EN ISO 2439 etc.
- Textiles – pension, pressure
 - DIN 53 835/3, DIN 53868, DIN 53507/53 539
 - Geotextiles EN ISO 10319
 - Surgical fabrics testing
- Construction materials
 - ¼ point bending LOP
 - CBRTtest
 - Marschall test DIN 1996
 - Static Yong module ONORM B 3303
 - Cross sill test DIN EN 13230 etc.
- Paper
 - EN ISO 1924, DIN 53 121
 - Compression test (RCT,CCT,CMT,CLT,ECT,FCT)
- Ceramics
 - DIN EN 843-1, EN 993-6
- Torsional testing tension/torsion
- Springs
- Special applications
- Customer applications

