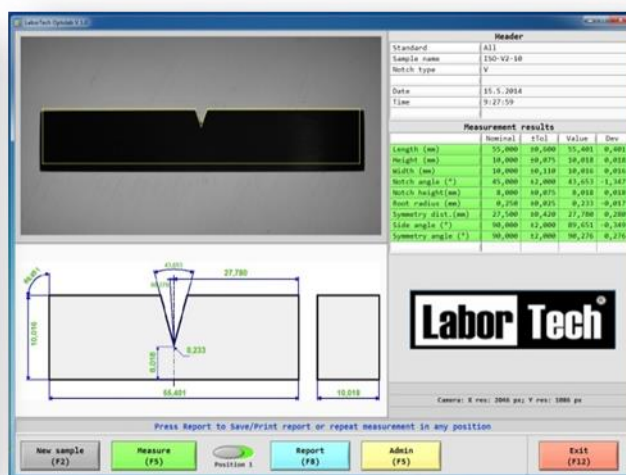
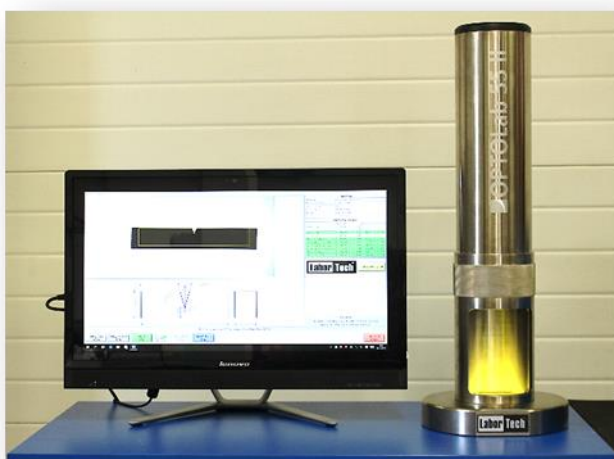


Product information

Optical device for automatic specimen dimensions check OPTOLab 55 II



Machine use

Optical check of the specimen dimensions OPTOLab 55 II generation is used to check the dimensions of specimens intended for impact resilience tests in input and output checks in testing facilities and laboratories. The device is qualified for use in quality systems according to ISO 9001:2009.

The device was designed so that in conjunction with notching machine VRE makes a compact workstation that provides 100% specimens for notch toughness tests.

Description, properties and function

- The test device consists of a test stand which is robust and provides high stability of the measurement
- Ideal ergonomic design
- A part of the rig is a special anti-vibration pad, which eliminates vibrations from the environment, and bayonet closing of workspace
- Automatic, accurate, fast and contactless measuring of specimens within 5 sec with colour optical visualization
- Thanks to a telecentric lens also specimens with smaller widths can be measured without adjustments
- Underlying illumination of specimens with anti-scratch protection
- Control via LCD touch screen or keyboard
- Possibility of integration into software for notch toughness test ImpactTest
- The device meets all necessary safety requirements, such as EN ISO 12100:2010, EN356, DIN 51333, EN ISO 13849 and other European standards
- Integration into robotic system BLUE RUNNER.

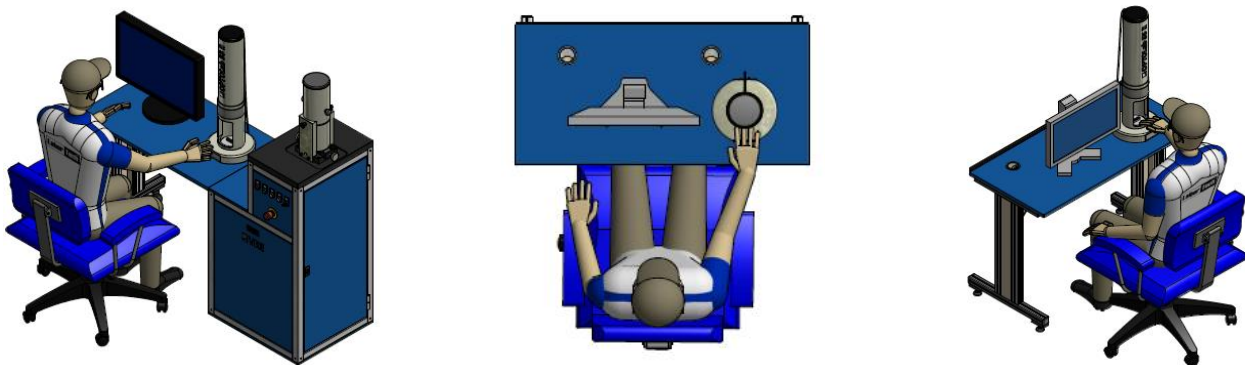
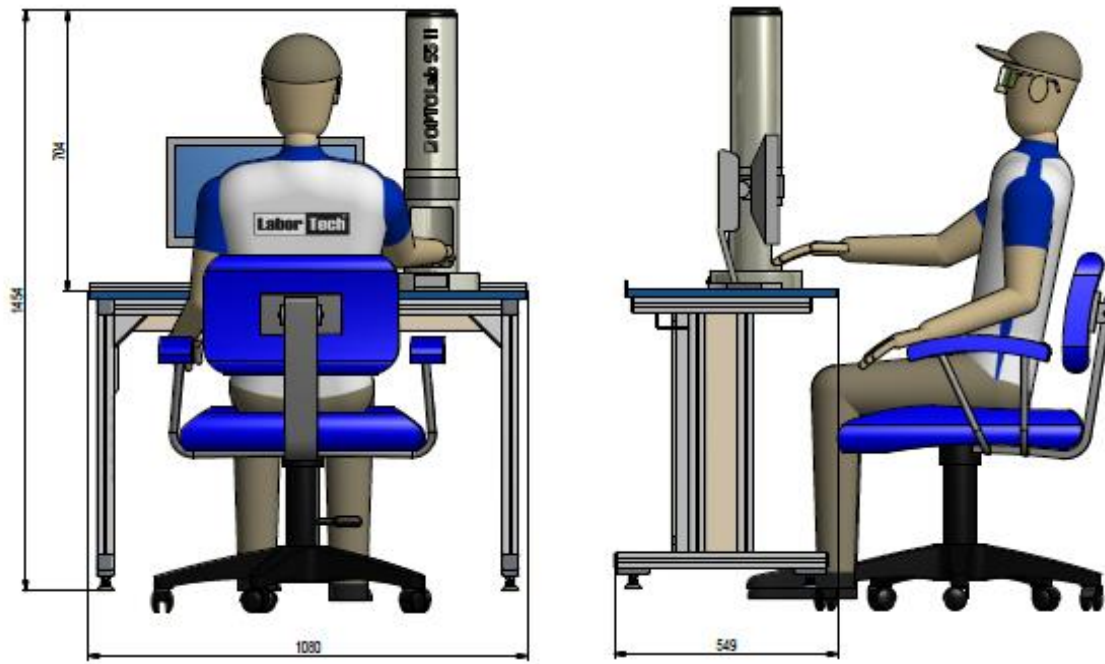
Properties of software OPTOLab® - FULL

OPTOLab is an integral part of optical check II generation supplied by LABORECH. With this software, you can streamline, clarify and accelerate the implementation of **specimen check** for notch resilience tests according to standards EN, ASTM and GOST and customize your testing environment so that it is easy for operators to use the device regardless their skills.

- Simple, inductive and efficient
- Intuitive control via LCD touch screen
- Fast and rational check of specimen dimensions
- Colour identification of individual parameters and specimens GOOD and BAD
- Editable types of specimens and test standards
- Calibration and verification acc. calibration specimen
- Automatic evaluation of specimen dimensions
- Saving of measured data in a database
- Extensive calibration mode
- Modification of item names
- Multilanguage version (English and Czech)
- Protocol printing in PDF format

The machine contains:

- 1 Metering tube with integrated illumination
- 1 LCD touch screen with PC – HP Touch
- 1 Software OPTOLab
- 1 Licence modules according to standard type
- 1 Reference specimens with calibration certificate
- 1 Tool for specimen cleaning
- 1 Preparation for connection to VRE
- 1 Documentation in English



Technical data	Units	OPTOLab 55 II
Machine type		vertical
Illumination type		LED
Lens		Telecentric
Check according standards		EN, ASTM, GOST
Distortion	%	< 0,1%
Operation system		Windows 10
Colour finish		NI (RAL 5015)
Dimensions (diameter x h)	mm	240 x 704
Weight	kg	32
Voltage	V	230V/50 Hz
Power input	VA	10

Technical changes reserved by the manufacturer

Manufacturer:

LABORTECH s.r.o., Rolnická 130a, 747 05 Opava, Czech Republic. Tel.: +420 553 731 956, +420 553 775 327
 Mob.: +420 602 527 646, +420 731 656 723, info@labortech.cz, www.labortech.cz, Czech Republic

