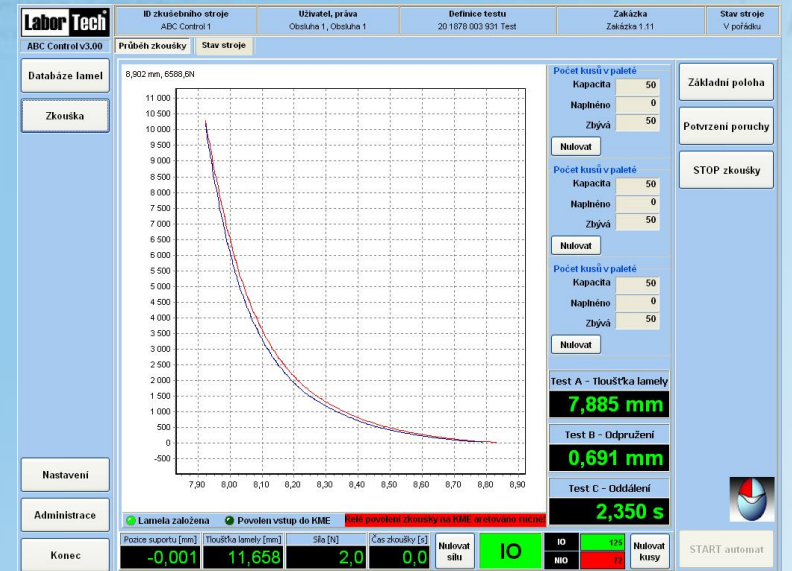


...from development to  
implementation



## Production of materials testing equipment and automation

**ABCControl**  
Software for measuring the overall  
characteristics of PKW lamellae





**Labor Tech**

Production of materials testing equipment and automation

**KMTest**

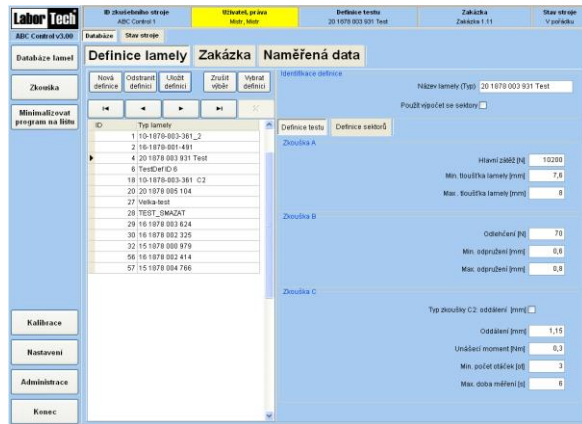
Torque, angular and fatigue torque measurement software

...from development to implementation

## Description of testing software ABCControl

The testing software ABCControl has been developed in a modular way on an already tested platform of software by LABORTECH. The program uses MS Windows 10 or higher. The application is designed for industrial systems that are controlled by touch LCD screens.

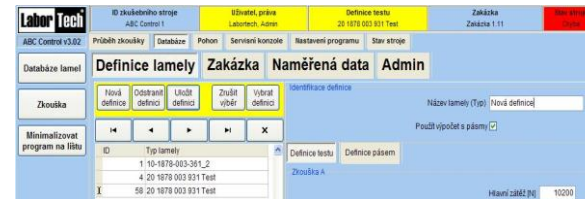
The ABCControl software serves to measure the overall characteristics of PKW lamellae, ie. lamella thickness measurement test A, flap relief test B, driving torque test C and as a complement, curve tracking in sectors test D.



All these results, including the graphical record, are archived in the results database with the possibility of filtering individual items, definitions of tests with the ability to write input data at your discretion, etc. Thanks to the modular design, the software can be applied to machine types such as the AS-ABC 5 or KM series with manipulators or robots. The software is well prepared for these applications and can select IO and NIO pieces. NIO pieces can be selected by the type of an error ie. A, B, C, D, and subsequently communicate with peripherals to put the piece into the correct NIO box. Of course, there is also monitoring or the number of the parts in the box.



In our software, a list of users and their access rights (operator, service, metrologist, etc.) who can log in via a touchscreen LCD or a reading card can change and expand the item names, change and expand specimen types etc.



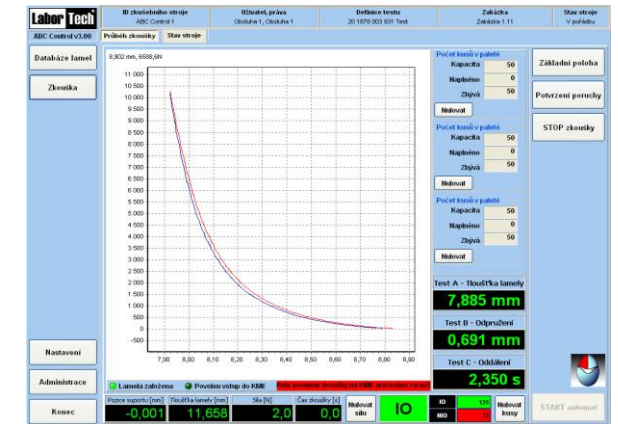
## Control of measuring and control electronics

The ABCControl software controls EDC and EDCi measuring and control electronics with a maximum sampling frequency of 5 or 10 kHz. The software can also communicate with the SIEMENS electronics, usually providing safety and machine connection to robots, manipulators and test lines.

## Features of software ABCControl

ABCControl is an integral part of all LABORTECH test systems that provide 100% control of PKW lamellae. This software helps you increase the quality and productivity of your semiautomatic and automatic operations in AUTOMOTIVE. You can streamline, refine and accelerate the performance of your tests and customize your testing environment so that measurements are easy in the ABCD material mechanical method testing, regardless the operator skills.

- Intelligent, intuitive and powerful software designed for 100% measurement of PKW blades in continuous operation
- Digital display of all current values.
- Storage of measured data into a database with the possibility of filtering by definition, orders, data,
- Easy switching between operations, databases, and user settings.
- Easy settings defined by the selected type
- Precise machine status information and error messages.
- Correction of measured values according to reference patterns
- Export data to CSV - BASIS, or MY SQL and MS SQL
- Unlimited license



## Structure of software ABCControl

- User login
- Definition of the test
- Order Definition
- OPERATION - displayed parameters
- Measured data
- Start testing and recording during the test
- Machine status report
- Setting options
- Setting user rights

## LABORTECH in the world



### Contact:

#### **LABORTECH s.r.o.**

Rolnická 130a, 747 05 Opava, Czech Republic

Tel: +420 553 731 956, +420 553 668 648

E-mail: [info@labortech.cz](mailto:info@labortech.cz)

Web: [www.labortech.cz](http://www.labortech.cz)

GPS: 49°57'05.1"N

17°54'04.4"E

#### **LABORTECH TRADING s.r.o.**

Areál VVÚD Praha, Na Florenci 1686/9, 111 71 PRAHA 1, Czech Republic

Tel: +420 731 656 723, +420 724 020 052

E-mail: [trading@labortech.cz](mailto:trading@labortech.cz)

Web: [www.labortech.eu](http://www.labortech.eu)

**Labor Tech**

Production of materials testing  
equipment and automation

LABORTECH in the  
world

...from development to  
implementation