

Product Information

Electromechanical Testing Machines LabTest 6.10 - 6.20

Machine use

Electromechanical universal testing machines of the series 6.xx.1 with new design are intended for mechanical tests in tensile, compression and bending during loading of specimens and whole products. Double column bench top or floor top design, with capacity from 10 kN to 20 kN are produced with different heights of testing areas from 1100, 1700 to 2300 mm, and widths from 460 to 650 mm. The machine frame can be extended to several testing areas (3).

Machine description and the main advantages

- The testing machine is equipped with a ball screw with preload and a linear guide, which allows partial out off-axis loading of specimens.
- Robustness of the frame ensures high rigidity, durability and resistance against vibration and mechanical damage.
- Machine and working area ergonomic allows easy manipulation with specimens and accessories.
- AC servo drive and belt drive with low noise level ensures low maintenance claims of the machine during tensile and compression testing.
- Ability to manage the machine speed in the range of 0.0005 to 2000 mm/min.
- A modular configuration of the machine with the ability to add any accessories from LABORTECH company, including extensometers, temperature chambers, probes, tools, protection covers etc.
- Due to high data acquisition rate **1 kHz** and high resolution of AD converters **24 bit**, the measuring electronics allows very accurate testing in a large measuring range of the loading cell without any retrofitting of the machine with another sensor.
- High operator comfort and customization tools for specific customer requirements, such as special protective covers, different speeds, different types of special grips, adjustments of X-head travel for custom tools etc.
- Ability to control the machine with a remote control RMC 6 with one button via PC or tablet.

The base machine includes:

- Machine frame including electronics EDC 220
- Bench top design for table version
- "S" series load cell for tension/pressure at full loading
- Remote control RMC 6 with LCD display
- Software integrated in the remote control

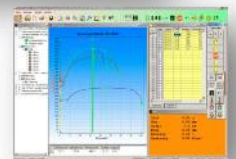
Supplements and Accessories

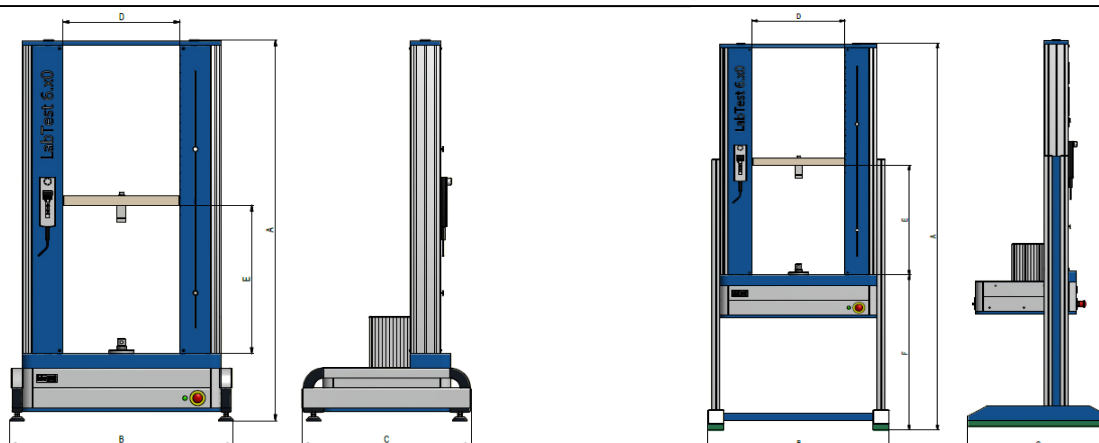
- Wide range of grips, compression and bending tools
- Extensometers (mechanical, contactless)
- Special temperature chambers high temperature furnaces
- Pneumatic aggregate for grips control
- Possibility of delivery with additional testing areas



Software Test & Motion® Features

- Simple, intuitive and efficient
- Definable all kinds of protocols printing
- Individual files programming
- A set of programs for your own individual testing
- Available almost all standard methods of evaluation
- Special specific applications, programmable modules
- Digital imaging of all channels
- Extensive statistics of results
- Saving of results data in ASCII format, SQL and Excel file
- Transferring data from other devices like touch thickness gauge, scales, etc.
- Compatibility with each EDC box system by Labortech company
- Possibility to add more additional channels
- Quick and efficient testing
- 9 languages (En, Cz, Ge, Fr, Pol, It, Sp, Ru, Du)
- Protocol printing in various languages
- Installation on any computer without a licence





Technical data	Units														
		6.10.1.10	6.10.1.20	6.10.1.30	6.10.1.11	6.10.1.21	6.10.1.31	6.20.1.10	6.20.1.20	6.20.1.30	6.20.1.11	6.20.1.21	6.20.1.31		
Load capacity	kN	10						20							
Number of columns		2													
Number of ball lead screws		2													
Number of linear guides		2+2													
Minimum testing speed	mm/min	0,0005						0,0005							
Maximum testing speed	mm/min	2000						1500							
Travel resolution	μm	0,0651						0,0462							
Repeatability of X-head travel	μm	±1						±1							
Weight ¹	kg	180	205	229	210	236	273	200	225	249	230	256	293		
Dimensions²															
Height of the Machine (A)	mm	1530	2130	2730	1530	2130	2730	1530	2130	2730	1530	2130	2730		
Width of the Machine (B)	mm	877	877	877	1067	1067	1067	877	877	877	1067	1067	1067		
Depth of the Machine (C)	mm	663	663	663	663	663	663	663	663	663	663	663	663		
Width of test space (D)	mm	460			650			460			650				
Height of test space (E)	mm	1100	1700	2300	1100	1700	2300	1100	1700	2300	1100	1700	2300		
Environmental conditions															
Operating temperature	°C	10 to 35													
Storage temperature	°C	-35 to 55													
Humidity range	%	< 90													
Noise level ³	dB	< 65													
Electrical connection															
Supply voltage	V	230 ... 240 / 50-60Hz						230 ... 240 / 50-60Hz							
Fuse	A	16						16							
Power Rating	kVA	1,3						1,3							

¹Without accessories

²Changing parameters: extension dimension A in the range of +230 or +580 mm B +23 mm, C +237 mm, F +500 mm or +850 mm. Stand weight 48 kg

³Measured at 1 m distance from testing machine without loading

Technical changes are reserved by the manufacturer

Manufacturer:

LABORTECH s.r.o., Rolnická 130a, 747 05 Opava, Czech Republic. Tel.: +420 553 731 956, +420 553 775 327
 Mob.: +420 602 527 646, +420 731 656 723, info@labortech.cz, www.labortech.cz, Czech Republic

